

27-154

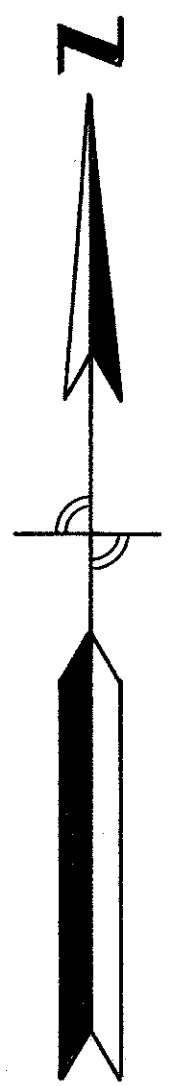
154

PALM BEACH NATIONAL GOLF AND COUNTRY CLUB ESTATES

PLAT NO. 2

IN 3 SHEETS

SHEET NO. 3



COUNTY MAINTAINED SIDEWALKS REQUIRED

SHEET NO. 2

PLAT NO. 1
PALM BEACH NATIONAL GOLF & COUNTRY CLUB ESTATES
P.B. 27 - PGS. 144 & 145

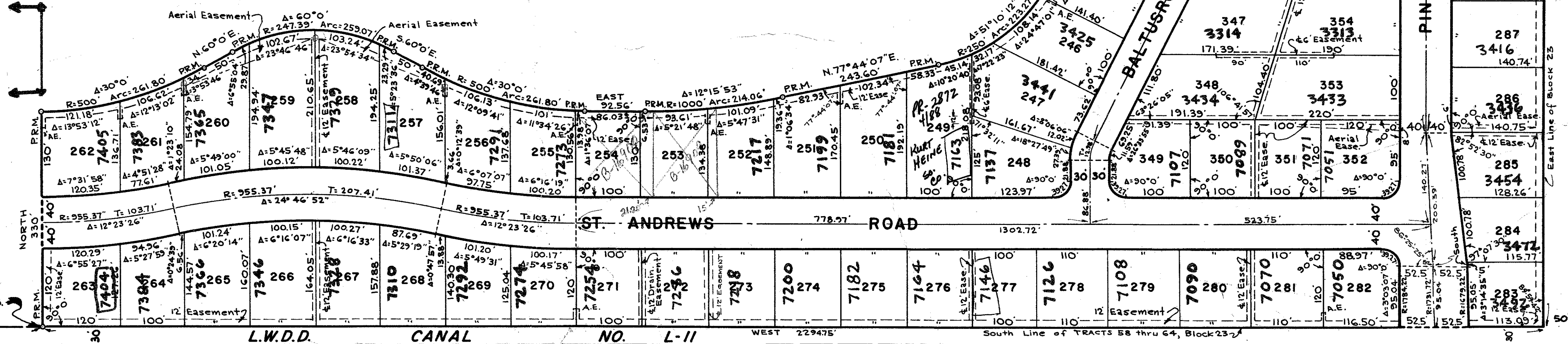
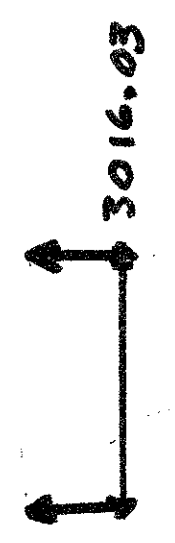
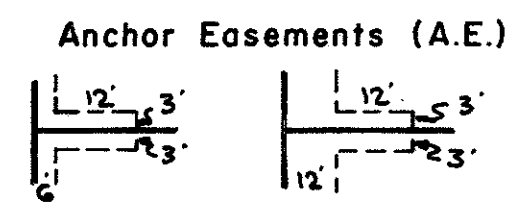
NOTE

Building Setback Lines shall be as required by Palm Beach County Zoning Regulations. There shall be no buildings or other structures placed on Utility Easements.

There shall be no buildings or any kind of construction or trees or shrubs placed on Drainage Easements.

NOTE

All Block Corners are rounded with a 25 ft. radius curve unless otherwise shown. Easements are for Public Utilities, unless otherwise noted.



P.B. 2 - PGS. 47

27/154

1000-311

PLAT NO. 2
PALM BEACH NATIONAL GOLF & COUNTRY CLUB ESTATES
IN 3 SHEETS SHEET NO. 3

JOHN ADAIR, JR. & ASSOC.
ENGINEERS & LAND SURVEYORS
LAKE WORTH, FLORIDA

DR. B.M.	DATE, OCT. 1962	FP-341
CK. R.W.	SCALE, 1" = 100'	
S.A.J.	JOB NO. 62-200	

PALM BEACH NATIONAL GOLF AND COUNTRY CLUB ESTATES

P.B. 2 - PGS. 47

Lots 283 thru 307
see Report
2/20/64